

# Delivering Ultimate Mechanical Perfection.



FARMING WITH PASSION

## **PREET 4949**

TRACK TYPE MULTICROP  
COMBINE HARVESTER



**Specially Designed for :**



Wheat



Paddy



Maize



Red Gram



Soybean



Sunflower



Mustard



Grams



Arhar



Moong

# Ready to Thrill with eye catching Features :



2.1m wide cutter bar for excellent performance under any paddy condition. Heavy duty single sheet drawn reel.



Wide crawler increases the surface contact of the machine & reduces the ground pressure. Higher level of tractive efficiency.



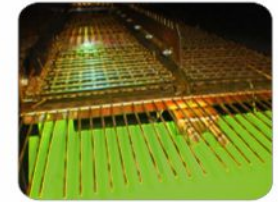
Grain tank can be emptied quickly with discharge tube. Discharge tube can be easily engaged & disengaged with rods & latch assembly.



Easy to open elevators for maintenance and service.



Long distance focus lights.



Well designed sieve section has a large cleaning area for optimum grain efficiency.



Best paint quality



Comfortable cushioned driver seat



Tiny pocket provided for small tools



Heavy duty sprocket for long life. More width of track roller increases grip between rollers & crawlers. Minimize the surface pressure



HST transmission enables to drive the machine at infinite speed ratio with maximum efficiency. Front & rear movements of levers control the forward & reverse motion of machine. High quality EATON pump & hyd. Motor used.



Large space provided for large tools



Stainless sheet used for long life of parts which are subjected to more wear.



Prongs adjusting lever provided.



New design control panel for better display & easily operate all levers & switches.



Large capacity hydraulic tank



Cutter bar safety cylinder.



With grain tank capacity of 1300L. We can do harvesting for longer period. Improves operational efficiency.



Light weight of machine & wide crawlers help us to harvest in deep paddy condition.



Large & wider operator platform & roof ensures maximum comfort for the operator during working



Tangential axial flow (TAF) Threshing & separation mechanism provides excellent grain quality with min. losses & excellent threshing efficiency.

# PREET 4949 TRACK TYPE MAIZE COMBINE HARVESTER

## TECHNICAL SPECIFICATIONS

### A. ENGINE

Power	76 HP AT 2200 RPM
No. of Cylinders	Four
Air Cleaner	Dry and Wet
Cooling System	Water Cooled

### B. TRANSMISSION / DRIVE

Hydrostatic Transmission comprising of hydraulic variable displacement, double pump and two fixed displacement motors.

### C. THRESHING MECHANISM

Threshing Drum Dia (mm)	460
Threshing Drum Width (mm)	560
Separating Cylinder Dia (mm)	440
Separating Cylinder Width (mm)	1245
Threshing Drum Speed (RPM)	940

### D. CONCAVE

Concave Width	555
Clearance	Front 17 mm, Rear 17 mm

### D2. CLEANING SYSTEM

Upper Sieve Area	Forced Air Cleaning Fan	
Lower Sieve Area	0.67 m <sup>2</sup>	Total 1.2 m <sup>2</sup>
	0.53 m <sup>2</sup>	

### E. CAPACITIES

1.300 m <sup>3</sup>	
Grain Tank	1000 Ltr.
Fuel Tank	

### F. ELECTRICAL SYSTEM

	12 V, 100 Ah Battery starting, complete lighting equipment, front and rear lights.
--	------------------------------------------------------------------------------------

### G. TRACK ASSEMBLY

Length of Belt on Ground	1755 mm
Track Width	1400 mm
Width of Belt	450 mm
No. of Track Rollers (each side)	5
No. of Rubber Grousers (each side)	60
Height of Grouser	30 mm
Nominal Ground Pressure (kg/cm sq.)	0.31

### H. MAIN DIMENSIONS

	WORKING	TRANSPORT
Length	5650 mm	5650 mm
Width	4485 mm	2460 mm
Height	2785 mm	2785 mm
Ground Clearance	400 mm Body Frame, 240 Hyd. Motor	
Total Weight	5040 Kg. approx.	

Note : As per our policy is that of continuous development, specifications may change without any prior notice. For further details contact your nearest dealer.

**PREET Tractors**  
20 HP to 100 HP  
Available



**PREET 4949**  
**HORNETT**  
BSIV  
Backhoe Loader



**PREET 987**  
**DELUXE**  
Multicrop  
Combine Harvester



**PREET 987**  
4x4 Multicrop  
Combine Harvester



**PREET 7049**  
Maize Combine Harvester



**PREET 987**  
**STELLAR**



**PREET 987 STELLAR**  
Maize Combine Harvester with AC Cabin



**PREET 849**  
Multicrop  
Combine Harvester



**PREET 849**  
**Compact 'C'**  
Combine Harvester



**PREET**  
4949 TAF  
Track Combine  
Harvester



**PREET**  
4949 RUDRA  
Track Combine Harvester



**PREET**  
949 T  
Track Combine Harvester



**PREET**  
Baler



**PREET**  
Super Seeder



**PREET**  
Rotavator



Authorised Dealer :



**PREET AGRO INDUSTRIES PVT. LTD.**  
Patiala Road, NABHA-147 201 (Pb.) INDIA.  
Tel.: 01765-220400, 222609 | Toll Free : 1800-4190349  
Email: sales@preetagro.com, info@preet.co